



Thursday to Sunday

March 2-18, 2023

Thu-Sat 8pm • Sun 2pm



Directed by Clair Henderson

Produced by special arrangement with Playscripts, Inc.
(www.playscripts.com)

Bedford Players Theatre
1408 Bedford Highway
Bedford, NS



Ticketpro
www.ticketpro.ca
888-311-9090

Are you looking to..

Downsize?

Relocate?

Know the worth of your home?

Explore your options?



Let's have a chat!



Nick Ogden | Realtor
nogden@pressrealty.ca | 902.240.0635

PRESS
realty

Bedford Players Community Theatre
1408 Bedford Highway
Bedford NS

 /bedfordplayers
 /bedfordplayers_theatre

To advertise in our program contact:
programs@bedfordplayers.ca

The use of cameras, cell phones, and all recording devices is prohibited in the theatre. Please ensure cell phones and other devices that may disturb patrons or actors are turned off.

Bedford Players Community Theatre consists entirely of volunteers. If you're interested in volunteering with the theatre, please contact volunteer@bedfordplayers.ca

There will be a 15 minute intermission between acts.

The canteen will not be available for this production. Complimentary water will be available to patrons.



Presents...



Directed by Clair Henderson

Produced by special arrangement with
Playscripts, Inc.
(www.playscripts.com)



Ticketpro®
www.ticketpro.ca
888-311-9090

The Cast

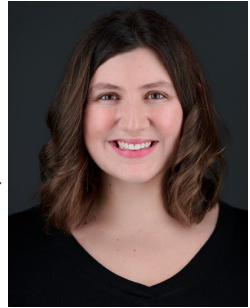
Sister Philamena.....	Jacqueline Miller
Sister Augusta.....	Joy Resch
George.....	Adam Piercy
Mother Superior.....	Elaine Melanson
Paul.....	Kyle Grace
Sally	Megan Cataford
Sister Mary Catherine.....	Trelawney Erwin
Father Chenille	Jim Petrie

Creative Team

Director.....	Clair Henderson
Stage Manager	Kimberly Charron
Assistant Stage Manager	Leslie Monteyne
Lighting & Sound	Stephen Melanson
Set Construction & Painting	Bryn Rowlands & Beth Spratt
Set Dressing & Props	Amanda Willmore
Wardrobe	Ann Merritt
Hair & Make-Up.....	Alexandra French
Production Graphic.....	Matthew Goodmanson

The Cast

Megan Cataford (Sally) - Megan is very excited to return to the stage with the Bedford Players! She has a long history of volunteering with different theatres in various roles. She has spent her time acting, working behind the scenes, helping with front of house and even appeared on stage as Suzette in *A Fine Monster You Are!* Megan is very excited to return to the stage as Sally in *Drinking Habits!*



Trelawney Erwin (Sister Mary Catherine) - A performer since childhood, Trelawney Erwin is excited to be participating in her first Bedford Players show. Her previous experiences include a Bachelor's Degree in Dramatic Arts, working as an entertainer with Princess Cruises, and performing as a regular cast member with Icebox Radio Theatre for over 16 years. With a 4-year hiatus from stage performance, Trelawney is both itching and nervous to entertain a live audience once again. Trelawney's favourite trivia fact is that the unicorn is the national animal of Scotland.



20 Duke Street, Unit 109
Bedford, NS
(902) 576-5115
hottubuniverse.ca

The Cast



Kyle Grace (Paul) - Kyle was born on the outskirts of Sackville, Nova Scotia. He expressed interest in performance arts at a young age, but never pursued it outside of a halfway-decent play in grade 9. Years later, he found an opportunity with the Bedford Players local theatre, and they graciously took him in. This will be Kyle's debut adult performance, playing the role of Paul. He wishes to thank all his friends and family for their continued support on such short notice.



Elaine Melanson (Mother Superior) - is beyond happy to be back on the Bedford Players stage, doing what she loves best – making live theatre! She seems to make it a “habit” of playing nuns, having previously been seen as Sister Vivian Salter in BP’s *Habit of Murder* and Mother Superior in *The Sound of Music* (Hilltop Theatre). Fresh off her role as Alan Adale in BP’s recent production of *The Somewhat True Tale of Robin Hood*, she has previously trod the boards at Bedford Players in *Calendar Girls* (Marie), *The Cemetery Club* (Ida) and *Sex Please, We’re Sixty* (Mrs.

Stancliffe). Along with film and television gigs, Elaine keeps busy as a member of the BP Executive Council and an active volunteer behind the scenes. Elaine sends big thanks to the fantastic cast and crew for making this show such a joy to be in, and to director Clair for casting her in this fun and funny role. Enjoy the show, everyone!



Jacqueline Miller (Sister Philamena) - Born and raised here in Bedford, this is Jacqueline’s first show with Bedford Players - though she’s no stranger to the stage. She holds a Bachelor of Music (Drama minor) from Mount Allison University, and completed the Film & Television Acting program at Vancouver Film School. Some of her favourite stage credits include Kala (*Tarzan*), Crystal (*Little Shop of Horrors*), and Miss Jones (*How To Succeed in Business Without Really Trying*). Jacqueline is excited to end a 3 year performing hiatus with her role as Sister Philamena,

and hopes you enjoy the show!

The Cast

Adam Piercy (George) - Adam is a classically trained actor who graduated from the Oxford School of Drama in the UK in 2003. He performed on various national theatre tours and the occasional TV show. Upon starting a family and recognizing that the acting life was no more for him, he transitioned into the glamorous world of Digital Transformation, where he now spends most of his time. This is the first time he has "tread the boards" in over 15 years, so he is excited to reconnect and have fun.



Jim Petrie (Father Chenille) - Jim has been around for a while now. He last performed at BP in *The Somewhat True Tale of Robin Hood* as The Town's Guy. Jim has extensive experience on stage as an actor, comedian and public speaker. He lives in Middle Sackville with his wife Cheryl and their Golden Retriever, Lily. He'd like to take this opportunity to thank Clair for her confidence in casting him as Father Chenille and thank the cast and crew for putting up with his bad jokes for 3+ months.



Joy Resch (Sister Augusta) - Joy has been an actor with Bedford Players since 2012 and a volunteer for several productions over the years. Joy was very active in High School theatre and returned to acting at Bedford Players in *Murder in the Wings*, where she fell in love with acting all over again. She's done several plays over the past 10 years such as *Steel Magnolias*, *Calendar Girls*, *Don't Dress for Dinner*, *A Christmas Story*, *Arsenic and Old Lace*, and most recently, *A Somewhat True Tale of Robin Hood*. Along with theatre, Joy likes to dabble in film acting here and there, when the opportunity presents itself. Joy is so very happy to be working with Clair again and wants to thank her for the opportunity to be a part of this show. While the actors are a huge part of any live production, nothing happens on stage without the hard work of the entire crew backstage. Thank you to all the patrons who have joined us for this performance. Sit back, relax and enjoy the antics among the members in the convent of the Sisters of Perpetual Sewing. Hope you enjoy the show!!



Place and Time

Time: The present

Place: Convent of the Order of The Sisters of Perpetual Sewing

Scenes

Each scene takes place in the sewing room of the Convent

Director's Message



I was a bit hesitant when first approached to direct a Farce, but once I had read the script, I was fully on board. It is a fun spin on relationships and life-changing events with a bit of deceit thrown in. The humour is lighthearted and fun. Who knew there could be so many things going on in a convent with only three nuns?! Alcohol, romance, and secrets all go to make this a very funny play with a heartwarming conclusion.

The production would not have been possible without the incredibly strong cast and crew, coupled with their dedication and patience to make this work. I thank each and every one of you for your support, time, and energy to bring this play to life.

To our patrons, a huge thank you for returning to and supporting community theatre post a very trying few years of Covid. Without you, theatre would be a thing of the past. Spread the word that theatre is back and is fun. Enjoy the show! - Clair Henderson

FINBAR'S

I R I S H P U B

AUDITIONS

Bedford Players will hold auditions for our spring production of *Agatha Christie's **Murder on the Orient Express*** adapted for the stage by Ken Ludwig on March 19 and 20 from 7—9 pm. The dates are tentative—please check our website for details.

There is no need to make an appointment, or to prepare in any way for an audition.

President's Message



We are pleased to welcome you to our first production of 2023! Bedford Players is proud to present the hilarious farce, *Drinking Habits* by Tom Smith. We are so thankful to Director Clair Henderson for bringing her vision to our stage and to the cast, crew, and hardworking volunteers who brought this show to life. This production simply would not happen without your hard work and dedication. Thank you! And our sincere thanks to you, our valued patrons.

Community theatre at Bedford Players is only possible through your support - we appreciate you so very much! Now, sit back and join the Sisters of Perpetual Sewing as they take unorthodox measures to keep the convent doors open. Enjoy the show!

About the Author



Tom Smith - Tom Smith is a playwright whose published plays include *Drinking Habits*, *Drinking Habits 2: Caught in the Act*, *Dangerous*, and *The Odyssey*(Playscripts); *ESL*, *What Comes Around*, *A Christmas Carol* and *Johnny and Sally Ann...* and *The Wild and Wacky Rhyming Stories of Miss Henrietta Humpedowning* (YouthPLAYS); *Marguerita's Secret Diary* (Baker's Plays); *Gray* (Original Works Online);

and *The Pathmaker*, *Comedy of Errors* (editor), *Much Ado About Nothing* (editor), *Two Gentlemen of Verona* (editor), and *Love's Labour's Lost* (editor) (Encore Performance Publishing). His non-published plays have received productions both nationally and internationally. Additionally, monologues and scenes from his plays appear in books published by Meriwether Publishing and Smith & Kraus. Tom is the recipient of the Robert J. Pickering Award for Excellence in Playwriting, the ATHE Playworks Award, the Orlin R. Corey Outstanding Regional Playwright Award, the Richard Odlin Award, and has been a selected participant in numerous playwriting festivals across the country. He is a proud member of the Dramatist's Guild. Feel free to check out his website at www.tomsmithplaywright.com.

Source: <https://tomsmithplaywright.com/>

Creative Team

Clair Henderson (Director) - Clair is thrilled to be back directing at Bedford Players after a long hiatus. She has been involved in community theatre in the HRM since relocating to Nova Scotia from the UK in 2007. Clair has been involved both on and off stage, having acted with the Royal Navy Theatre Association before becoming established with Bedford Players, the highlight of which was getting to perform in the Edinburgh Fringe Festival in 1999 as the Wife of Bath in Chaucer's *The Canterbury Tales*. Clair is a Past President of Bedford Players and has also been on the executive at Dartmouth Players. She hopes you enjoy the show and has had a blast making it come together. Thank you to the wonderful cast and crew for giving up their time and, on occasion, due to inclement weather, risking everything to get to rehearsals. Bravo.



Creative Team



Kimberly Charron (Stage Manager) - Kimberly has enjoyed serving as SM for the talented cast and crew of *Drinking Habits* - her first time volunteering for Bedford Players. She's also been involved with the Theatre Arts Guild, including as Producer for *Rope*, ASM for *The Diary of Anne Frank*, and playing Tulip Twinkletoes in *Sleeping Beauty*. Kimberly spent over 10 years involved in theatre in Cape Breton, including directing for the One Act and Fringe festivals, SM for *Oliver!*, playing Sister Margaretta in *The Sound of Music*, Whore #2 in *Les Miserables*, The Laundress and Mrs. Cratchit in *A*

Christmas Carol. When she isn't acting, directing, or otherwise engaged in local theatre, you can find Kimberly involved in the WordPress community, gaming, knitting and hand-spinning, and dancing whenever she gets the chance.

YOUR AD HERE!

You could be advertising your business or service
in this space.

For more information

https://bit.ly/BP_ProgramAd

or scan



Massage Therapy

Naturopathic Medicine

Physiotherapy

Osteopath



Orthotics

57 Duke Street, Bedford

www.beewellihc.com

Yoga & Fitness

Registered Dietician

Chiropractic

Leslie Monteyne (Assistant Stage Manager) - Leslie

entered the world kicking and screaming, as a chubby baby born in a farming town smack in the middle of the tobacco belt, Delhi, Ontario. During her life she has lived all across Canada and ultimately decided to follow her heart to the sea, moving to Nova Scotia in 2018. Leslie fell in love with the theatre as a young girl, and wanted to become a Broadway star! Unfortunately she can't carry a tune to save her life (she was once booed during karaoke), so she pays the bills by working in the insurance industry. Last involved with the Bedford



Players as the Assistant Director on *Clue*, Leslie loves acting, directing, and stage managing, and is thrilled to be part of this hilarious production. Ding Dong ... shhhhhhhh!

Production Staff

Front of House	Jill Piers	Beth Spratt	Audrey Peake
Bob Baker	Kandy Simpson	Knights of	Rose Pearle
Suzanne Baker	Marion Stuart	Columbus—	Marilyn Sceles
Sandi Corbin	Lisa Sutherland	Council 9404	
Barbara Cowan	Michael	Technical	Poster
Kristina Creamer	Ziendenberg	Operators	Distribution
Joan Eager		Kevin Gerrior	Sandy Mitchell
Michele Edgerton	Set Construction	Michael Holland	Lynn Reicker
Linda Finnie	and Painting	Jim MacInnes	Joy Resch
Susan Garland	Elaine Melanson	Carl Wills	Amanda Willmore
Linda Goldwater	Stephen Melanson		Cast & Crew
Helen Goyan	Joy Resch	Phone	
Lillian Goyan	Brad Stevens	Notification	<i>And others who</i>
Wendy Hutt		Diana Mabbett	<i>may have been</i>
Lynne Isnor	Hall & Lobby	Dianne	<i>omitted due to</i>
Elgin Marko	Elaine Melanson	MacDonald	<i>printing deadlines.</i>
Ann Merritt	Pat Brinton		

Administration Team

Artistic Director	Michele Gaudet
Technical Director	Stephen Melanson
Production Manager	Alexander MacDougall
Assistant Production Manager	Karen L Waterfield
Sponsorship.....	Alexander MacDougall
Community Engagement & Support	Wendy Hutt
Front of House Manager	Rhea Vardy-MacPhee
Hall & Lobby Set up.....	Stephen Melanson & Rhea Vardy-MacPhee
Ticketing Liaison	Alexander MacDougall
Headshot Photography	Jay Fisher
Rehearsal Photography.....	Stephen Melanson & Michael Stack
Telephone Notification	Sandy van der Made
Program and Poster	Alexander MacDougall
Program Proofreaders	Karen L Waterfield & Michele Gaudet
Volunteer Coordination	Sandy Mitchell
Database Manager.....	Rose Pearle
Newsletter.....	Elaine Melanson
Social Media	Sandy Mitchell, Karen L Waterfield, Elaine Melanson, Stephen Melanson
Website	Alexander MacDougall & Stephen Melanson

Get involved

Would you like to become involved in Bedford Players Community Theatre? You don't have to act—there are many opportunities for involvement in small ways and big ways. There are a wide range of backstage, administrative and production positions available. Here's how to let us know:

As a **Volunteer**

Please go to our website, click on ***Volunteering*** and you'll be able to read details about some of the positions, or email **volunteer@bedfordplayers.ca**

As a **Sponsor**

email **secretary@bedfordplayers.ca**

As a **Charity of Choice**

email **secretary@bedfordplayers.ca**



1600 Bedford Hwy • Bedford, NS • B4A 1E8

902.484.3474 (484.FISH)

paul@aquarica.ca

aquarica.ca

PREMIUM FISH AND PLANTS
SUPPLIES INSTALLATION
MAINTENANCE

Stay in touch

If you'd like to receive email notifications of our future productions, auditions and events, you can go to the website and click on ***Subscribe to Newsletter***.

You'll always find us at
bedfordplayers.ca

Supporting the Community

For each show, Bedford Players donates tickets to local not-for-profit organizations to sell. The tickets, usually for the opening weekend, are sold at regular prices with all proceeds going to the organization. We thank Ticketpro for recognizing this contribution and providing these tickets with no service fees. The organizations for this production are Parkinson's Society of Nova Scotia and Lung Association of NS & PEI.



B R E A T H E
the lung association

Bedford Players offers a scholarship of \$500 each year to a student, from a local high school, who will be going on to study theatre arts. Information packages are distributed to eligible schools and are also available on our website. The scholarship committee meets regularly to review the guidelines and establish the value of the coming year's scholarship. More details can be found on our website.

A **Charity of Choice** is often selected for a production. This organization has the opportunity to set up a display in the lobby, and we donate \$1 for each ticket sold to the organization. We chose not to re-start our **Charity of Choice** program this season, but hope to do so for 2023-24.

We appreciate...

All Saints Anglican Church, Wardens Bob Attenborough & Fred French, Rev. Trevor Lightfoot and Parishioners for their ongoing support and our wonderful rehearsal and performance venue.

Assistance provided by **Stephen Rand** with construction of the trunk.

Our **Sponsors** who are found throughout the program. Please support them with your patronage.

You—**Our Patrons**—who make it all worthwhile!

Our many **Volunteers** who work diligently to make our productions a huge success. Your hard work is greatly appreciated by all.



www.captureit.photography

  @captureit.photog

**Headshots for
People Who
Hate Having
Their Photo
Taken**



**Proud to support Bedford Players
Enjoy the show!**

Bedford Players' Executive

President	Michael Stack
Vice-President	Alexandra French
Past-President	Elaine Melanson
Treasurer	Alexander MacDougall
Secretary	Pat Brinton
Artistic Director	Michele Gaudet
Technical Director	Stephen Melanson
Member at Large.....	Amanda Willmore
Member at Large.....	Randy Burt
Member at Large.....	Ann Merritt
Member at Large.....	Joy Resch
Member at Large.....	Mike Taylor
Church Liaison/Member at Large.....	Fred French



Get hooked on
the action!

217 Bluewater Rd
Bedford, NS

902-835-9300

www.actionlasertag.ca

info@actionlasertag.ca

Upcoming...



bedfordplayers.ca

Agatha Christie's Murder on the Orient Express

Adapted for the stage by Ken Ludwig

Directed by Lorraine Cantwell

June 1-17, 2023



dartmouthplayers.ns.ca

August: Osage County

By Tracy Letts

Directed by Bryn Rowlands

April 20—29, 2023



tagtheatre.com

The Glass Menagerie

By Tennessee Williams

Directed by Angela Butler

Selected dates March 16 to April 1, 2023

Mader's Roofing

Flat & Asphalt Shingle Roofing



***"Let Mader's recover
your investment"***

902 492-2868

ALL TYPES MASONRY SERVICES

Mader's Roofing Ltd

Larry Mader

Bus: 902 492-2868

Fax: 902 864-1557

Cell: 902 830-4236

**P.O. Box 254
Lower Sackville, NS,
B4E 2Z6**

**www.madersroofing.com
info@madersroofing.com**