



Thursday to Sunday
June 5 to 21, 2025
Thu-Sat 8pm - Sun 2pm



A Murder IS ANNOUNCED

by Leslie Darbon
Adapted from Agatha Christie's novel



Directed by Kelly Morrison

"A Murder Is Announced" is presented by arrangement with Concord Theatricals
on behalf of Samuel French, Inc. www.concordtheatricals.com

Bedford Players Theatre
1408 Bedford Highway
Bedford, NS



Bedford Players Community Theatre
1408 Bedford Highway
Bedford NS

 /bedfordplayrs
 @BedfordPlayers

To advertise in our program contact:
programs@bedfordplayers.ca

The use of cameras, cell phones, and all recording devices is prohibited in the theatre. Please ensure cell phones and other devices that may disturb patrons or actors are turned off.

Bedford Players Community Theatre consists entirely of volunteers. If you're interested in volunteering with the theatre, please contact:
volunteer@bedfordplayers.ca

There will be a 15 minute intermission between acts.

The canteen will be available before the show and during intermission.



Presents...



A Murder IS ANNOUNCED

by Leslie Darbon
Adapted from Agatha Christie's novel

Directed by Kelly Morrison

"A Murder is Announced" is presented by arrangement with Concord Theatricals on behalf of Samuel French, Inc.
(www.concordtheatricals.com)


hospice
HALIFAX


Ticketpro

President's Message



President
Elaine Melanson

Welcome to our third and final show of Bedford Players' 2024-2025 season! We're very happy you've joined us for this production of Agatha Christie's classic ***A Murder is Announced***. Considered a staple of crime fiction, this story, adapted for the stage by Leslie Darbon, is often cited as a fan favourite.

Bravo to director Kelly Morrison, Stage Manager Erin Niedermeyer, and Assistant Stage Manager Emma Whitley for their hard work and patient guidance as the cast worked through all the twists and turns of this thriller. Our team is excited to put on a fantastic performance for you, our wonderful patrons.

To everyone who contributed in any way to help bring this production to life, we offer a huge thank you. Bedford Players is entirely made up of volunteers who give generously of their time and talents to make our shows the best they can be.

One of those amazing long-time BP volunteers, Ann Merritt, recently passed away unexpectedly, and we are heartbroken at the loss of this much-loved member of our theatre family. Ann was instrumental in making sure things ran smoothly behind the scenes at Bedford Players - from sewing costumes to applying actors' makeup, setting up the lobby to managing our Front of House. If there was a job to be done, Ann was the first one to step up and say, "I'll do that!".

This production is lovingly dedicated to the memory of Ann. We miss you, dear friend.

Director's Message



Director
Kelly Morrison

My mom sparked my love for detective stories early on, as some of my fondest memories are of curling up with her to watch classic British whodunits on television — and no one embodies the spirit of the genre better than Agatha Christie, the undisputed queen of mystery.

In *A Murder is Announced*, Leslie Darbon draws us into Christie's world, where danger hides behind the most ordinary facades, and nothing — and no one — is quite as it seems. She has done a wonderful job adapting Christie's clever tale of twists, turns, and red herrings; everything you could want in a classic whodunit!

What drew me to this particular Christie mystery is the array of wonderfully complex, strong female characters, led by the brilliant Miss Marple. In a world that often underestimated women, Agatha Christie filled hers with sharp minds and strong wills, and I'm proud to showcase that spirit with this production.

I'd like to sincerely thank the valuable and talented volunteers at Bedford Players who helped to make this show possible. There is a lot of work that goes into putting on a production like this; from set construction, painting and decoration - to creating the lighting and sounds, and programming all the cues - to our publicity team and photographers - to the hours of scouring for the many costume pieces needed for each character - to the creation and procurement of our special props - to the Front of House and canteen volunteers - and everyone else in between - THANK YOU! I'd also like to extend a very special thank you to my stage management team; Emma, who doubles as our Rudi Scherz, helps keep everyone on track and we couldn't do it without her! And to Erin, my rock, thank you SO much for your organization, creative input and collaboration - it's been a trip!!

Bravo to my cast of *A Murder is Announced* - you've worked so hard and should all be very proud of our show; to our loyal patrons, I thank you for supporting community theatre and for being the reason we all get to play! Will you be able to unravel the clues to decipher just who the killer is before the final curtain? If not, we know that you'll certainly enjoy the journey!

Cast

In order of appearance

Julia Simmons	Brianna Babineau
Letitia Blacklock	Lorraine Cantwell
Dora Bunner	Karen Shewbridge
Patrick Simmons	Kyle Grace
Mitzi	Michele Gaudet
Miss Marple	Elaine Melanson
Phillipa Haymes	Theresa Hanna
Mrs Swettenham	Amanda Willmore
Edmund Swettenham	Ryan Pulsifer
Rudi Scherz	Emma Whitley
Inspector Craddock	Brad Morrison
Sergeant Mellors	Jim Petrie

The Play

Time	Rural England, October 1950
Act 1	Scene 1: Morning - Friday, October 13th Scene 2: Evening - Friday, October 13th Scene 3: Morning - Saturday, October 14th
Act 2	Scene 1: Afternoon - Sunday, October 15th Scene 2: Morning - Monday, October 16th Scene 3: Evening - Monday, October 16th

Cast



Brianna Babineau
appearing as
Julia Simmons

Brianna makes her Bedford Players debut as the charming yet suspicious Julia Simmons in this twist-filled murder mystery. A lifelong lover of the stage, Brianna is no stranger to the spotlight—though it's been a few years since her high school theatre days. However, her passion for performing first took root long before then. Now, she returns with renewed excitement and a flair for the dramatic. Offstage, Brianna fuels her fascination by reading murder mystery novels found through her bookclub members. She's delighted to join the Bedford Players family and hopes this production is only the beginning of many thrilling nights on stage.



Lorraine Cantwell
appearing as
Letitia Blacklock

Lorraine has been hanging around community theatre for a long, long time as an actor, director, and stagehand. And she has been a huge and dedicated fan of everything Agatha Christie – books, movies, television series – you name it – for an even longer time. So much so that she directed the Bedford Players production of *Murder on the Orient Express* two years ago at this very same time of the year! This time around, she is thrilled to be a character in the production, and she has loved absolutely every minute of it. It has been a fabulous experience – getting to play with new friends and old. It just doesn't get any better than this! Enjoy the show, everyone, and fingers crossed you don't figure out the culprit before the big, final showdown!

Cast



Karen Shewbridge
appearing as
Dora Bunner

Karen is pleased to be working with this wonderful, talented cast and crew. Their generosity and graciousness have made it an absolute pleasure to be on the stage again, especially as it's her first time on stage since Covid. Theatre is her passion, and she considers it a privilege to be chosen to play such a wonderful role. She loves the character of Bunny and hopes you do too. Some of her past roles include: Lucille in *The Cemetery Club* (Bedford Players), Sister Robert Anne in *Nunsense* (Dartmouth Players), Anna in *The Clean House* (Dartmouth Players), Kate in *The Best of Friends* (TAG), Deb in the film *The Cab Driver* (nominated for the ACTRA award for Outstanding Performance Female), and Lee in *Marvin's Room* (Dartmouth Players). Break a leg and enjoy the show everyone!

We appreciate
our patrons.

Thank you for
supporting
community
theatre.



www.captureit.photography

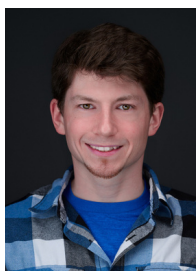
  @captureit.photog

Headshots for
People Who
Hate Having
Their Photo
Taken



Proud to support Bedford Players
Enjoy the show!

Cast



Kyle Grace
appearing as
Patrick Simmons

Kyle was born in the outskirts of Sackville, Nova Scotia. He has been an active member of Bedford Players since late 2022, and has performed in several shows such as *Drinking Habits* and *Murder on the Orient Express*. *A Murder is Announced* will be Kyle's second appearance in an Agatha Christie adaptation, where he will be playing the role of Patrick Simmons, the flippant undergraduate. Thanks to family and friends for putting up with my eccentricities. And a BIG thanks to those within Bedford Players, without whom I would likely not be here.



Michele Gaudet
appearing as
Mitzi

As well as being Artistic Director at Bedford Players, Michele has appeared in many community theatre productions, most recently as The Princess Dragomiroff in *Murder on the Orient Express* here at BP in 2023 and Mattie Fae in *August: Osage County* at Dartmouth Players also in 2023. Among her favourite roles are Sandy in *Four Weddings and an Elvis* at BP, Mrs Debenham in *Rope* at TAG, and Dorothy in *Glorious* at Dartmouth Players. Michele would like to thank Kelly and the extraordinary company of *A Murder is Announced* for making this such a delight, and to you, our audience, for your continued and faithful support of Bedford Players. Please enjoy the show!

Cast



Elaine Melanson
appearing as
Miss Marple

Elaine is thrilled to be back on the Bedford Players stage, this time in one of her bucket list roles – Miss Marple! Previous roles at BP include Ida in *The Cemetery Club*, Sister Vivian in *Habit of Murder*, and Evelyn in *Welcome to Paradise*. When not onstage, Elaine is often seen around the theatre, working behind the scenes. She is also a busy film, television, and voice-over actor, but her absolute favourite role in real life is that of Nanny to her five beloved grandchildren. Huge thanks to director Kelly for the chance to be part of this wonderful show, and a big shout out to the amazing cast and crew who worked so tirelessly to pull it all together. Thank you to my soulmate Steve for your never ending patience and support of my crazy acting obsession!



Custom Cribbage Boards, handcrafted in Canada and personalized with family names, crests, or logos. A one-of-a-kind gift that will be treasured forever.



Point your phone camera at this code to see our past creations



www.WestCoastLasercraft.com

Cast



Theresa Hanna
appearing as
Phillipa Haymes

Theresa is excited to be in her very first play! She's been a fan of theatre since she was little, thanks to a tradition of seeing a play every year with her mom. Being part of this production is a new and exciting step, and she's grateful for the chance to work with such a welcoming and talented group of people. By day, Theresa works as a counsellor, and she finds a strong connection between her profession and acting—both involve empathy, active listening, and stepping into someone else's shoes. When she's not working or rehearsing, she enjoys practicing Taekwondo and getting lost in a good book.



Amanda Willmore
appearing as
Mrs Swettenham

Amanda is very happy to be involved in this play with this wonderful cast and crew. You might have seen Amanda onstage last at Bedford Players as Friar Tuck in *The Somewhat True Tale of Robin Hood*. Since then she has been working on Bedford Players' plays, in behind the scenes roles! Amanda would like to thank her family for their love and support, as always and hopes that you, our patrons, enjoy this production.

Cast



Ryan Pulsifer
appearing as
Edmund Swettenham

Ryan is a returning face to Bedford Players, after making his debut in 2020 with back-to-back shows, *A Fine Monster You Are* and *Jitters!* During his time away, he graduated from the Radio Television Journalism program at NSCC with a focus in radio as a way to continue his passion for performance. He's very excited to make his long overdue return to the stage, and thanks his family and friends, whose presence in the audience makes the hard work all the more worth it.



Emma Whitley
appearing as
Rudi Scherz

Emma is thrilled to be returning to the stage as well as behind the scenes in this production of *A Murder is Announced*. Having been part of the Bedford Players family for over three years, mostly as a tech (lights and sound) operator, Emma stage managed our first show this season, *37 Postcards*, and has completed several Neptune Theatre School performance classes. When on stage as Rudi Scherz, Emma hopes to make you uncomfortable. Behind the scenes, she is enjoying Assistant Stage Managing such a talented cast and crew.

Cast



Brad Morrison
appearing as
Inspector Craddock

"Know your lines and don't bump into the furniture." - Spencer Tracy

With all due respect to Mr. Tracy, finding your character is a bit more complex than this. Actually, it is not unlike solving a murder. There are clues along the way, but you also have to listen to your intuition. Brad is pleased as punch to be given the privilege of playing Inspector Craddock. Previous Inspector adjacent roles include Sam Shovel in the spoof dinner theatre *Death Speaks Volumes* and William Gillette (the first actor to play Sherlock Holmes) in *The Games Afoot*. Brad would like to thank his talented castmates for bringing their A-Game, and all the amazing volunteers at Bedford Players who keep the "train on track". A special "tip of the hat" to our fearless leader Kelly for her artistic vision and infectious *joie de vivre*.



Jim Petrie
appearing as
Sergeant Mellors

Jim is a veteran actor in Community Theatre. His last show at Bedford Players was *Drinking Habits*, during the 2022-23 season. He would like to thank Kelly and Erin for this opportunity, as well as the rest of the cast and crew.

Playwright and Adapter

Agatha Christie

Author

Dame Agatha Mary Clarissa Christie, Lady Mallowan, DBE (1890 – 1976) was an English author known for her 66 detective novels and 14 short story collections, particularly those revolving around fictional detectives Hercule Poirot and Miss Marple. She also wrote the world's longest-running play, the murder mystery *The Mousetrap*, which has been performed in the West End of London since 1952. A writer during the "*Golden Age of Detective Fiction*", Christie has been called the "*Queen of Crime*"—a nickname now trademarked by her estate—or the "*Queen of Mystery*". She also wrote six novels under the pseudonym Mary Westmacott, and the non-fiction, *Come, Tell Me How You Live*, an account of working on a dig with her husband, archaeologist Max Mallowan. In 1971, she was made a Dame (DBE) by Queen Elizabeth II for her contributions to literature. She is the best-selling fiction writer of all time, her novels having sold more than two billion copies. Bedford Players has also produced Agatha Christie's *Murder on the Orient Express* (2022-23) and *The Mousetrap* (2012-13).

Leslie Darbon

Adapter

Leslie Darbon is a British dramatist who has adapted two Agatha Christie novels for the stage; her first adaptation of *A Murder is Announced* opened in 1977, and in 1981 her version of *Cards on the Table* premiered. She has also written *A Time to Kill*, and *Correspondence Course: A Play*.



Nordic Walk for Fitness, Weight Loss & Security

Nordic Walking Nova Scotia

www.NordicWalkingNovaScotia.ca

Quality Nordic Walking Poles & Supplies
Instructor Certification Training

Bill & Esther VanGorder
info@NordicWalkingNovaScotia.ca



Powered by Nordic Walking Nova Scotia

Creative Team



Director
Kelly Morrison


Kelly Morrison was last seen on the Bedford Players stage as the Swedish missionary, Greta, in *Murder on the Orient Express*. She has previously directed productions with TAG, Dartmouth Players, and the Halifax Fringe Festival, but ***A Murder is Announced*** marks her Bedford Players directorial debut! A passionate member of the community theatre world for the past 15 years, she is forever grateful to her husband – and favourite co-star – Brad, for introducing it to her. Many thanks to our extremely hardworking cast and crew for lending their time and their talents, and a huge thank you to Bedford Players' loyal patrons. Enjoy the show!

A photograph of a black Yamaha grand piano with its lid open, set against a dark background. The piano is the central focus of the advertisement.

THE *art* OF *music* LIVES HERE
Atlantic Canada's Exclusive Yamaha Platinum Piano Gallery

Doctor Piano

Piano Sales, Services and Moving
1658 Bedford Highway, Unit 20 Bedford, NS
902-455-0880 | www.doctorpiano.ca

 **YAMAHA**

Creative Team



Stage Manager

Erin Niedermayer

Erin has been actively re-involved in Community Theatre in HRM since 2017, as an actor, stage manager, director, and producer after many years away from the scene. She is excited to be stage managing at Bedford Players and helping to bring this fun production to the stage. Thanks to the cast and crew for all their talent, hard work, and dedication, and thank-you to Kelly for her vision, friendship, and collaboration! I hope all our Bedford Players patrons enjoy the show!



Assistant Stage Manager

Emma Whitley

Emma's biography is provided in the cast pages.

Thank you for supporting
Bedford Players.

Please let your friends know about us.
Word-of-mouth is our best advertising!

In Memorium...

This past April, we were heartbroken to hear of the unexpected passing of our dear friend Ann Merritt.

Ann was a dedicated volunteer at Bedford Players for many years, helping out behind the scenes in numerous ways, including as a faithful member of our Executive Council.

Her quick wit and dry sense of humour, her willingness to lend a hand at all times, and her beautiful smile made her a much-loved part of our BP family. We miss her dearly and will always treasure her memory.

Our production of *A Murder is Announced* by Agatha Christie, adapted by Leslie Darbon, directed by Kelly Morrison, is lovingly dedicated to the memory of Ann Merritt. Rest easy, dear Ann.



Annual General Meeting

Bedford Players



Join us for our
ANNUAL GENERAL MEETING
7 PM, JUNE 25TH, 2025

Theatre hall, Upper level of
All Saints Anglican Church
1408 Bedford Highway, Bedford

**Join us as we launch our exciting
2025/26 season!
Everyone is welcome**

Light refreshments will be served after the meeting

For more info, check out our website
at bedfordplayers.ca

Supporting Our Community

For each of our productions, Bedford Players donates tickets to local not-for-profit organizations to sell. The tickets, usually for the opening weekend, are sold at regular prices with all proceeds going to the organization. We thank TicketPro for recognizing this contribution and providing these tickets with no service fees. Fundraising support for this production is given to the Parkinson Society of Nova Scotia, and Bedford Grandmothers/Stephen Lewis Foundation.



**Stephen Lewis
Foundation**

Along with our fundraiser groups, Bedford Players selects for each production a Charity of Choice from causes close to our members' hearts. The selected charity receives \$1 from every ticket sold, along with patron donations and tips from our canteen.

The Charity of Choice for *A Murder is Announced* by Agatha Christie and adapted by Leslie Darbon is Hospice Halifax. Hospice Halifax is a compassionate and supportive community of staff members, volunteers, and donors dedicated to making dying and living as comfortable and meaningful as possible at the end of life. Offering both end-of-life care and grief & bereavement support to the wider community, Hospice Halifax supports individuals and their families with dignity, compassion, and respect.

The Hospice Thrift Store is a fundraising arm of Hospice Halifax, with all revenues supporting care for patients at the end of life and their families. It's located in Lower Sackville (32 Glendale Ave) and provides unique, new-to-you clothing and accessories. With amazing prices and high-quality items, you'll get incredible finds while also making a difference!

For more information, please visit hospicehalifax.ca



Creative Team Leads

Director	Kelly Morrison
Stage Manager	Erin Niedermayer
Assistant Stage Manager	Emma Whitley
Production Managers	Michele Gaudet & Fred French
Light & Sound Design	Stephen Melanson
Pre-show Slide Presentation	Michele Gaudet
Set Design, Construction, & Painting	Beth Spratt & Stephen Melanson
Props	Anna Gould
Set Dressing	Kelly Morrison
Wardrobe	Terri Smith-Fraser
Hair & Make-up	Alexandra French
Logo and Poster Artwork	Kelly Morrison
Video Production	Kevin Gerrior

Administrative Team Leads

Artistic Director	Michele Gaudet
Technical Director	Duncan MacPhee
Ticketing Liaison	Rhea Vardy-MacPhee
Sponsorship Coordinator	Bonnie Matthews
Canteen Manager	Joe LeBlanc
Front of House Manager	Tierney Thibodeau
Publicity	Alexandra French
Hall & Lobby Set Up	Pat Brinton
Photographer - Headshots	Jay Fisher
Photographer - Rehearsals	Carl Wills
Program	Alexander MacDougall
Poster	Kelly Morrison
Program Proofreader	Elaine Melanson
Poster Distribution	Fred French
Telephone Notification Team	Sandy Van der Made
Volunteer Coordinator	Clair Henderson
Volunteer Database Manager	Rose Pearle
Newsletter Editor	Elaine Melanson
Social Media	Stephen & Elaine Melanson
Website	Alexander MacDougall
Charity Coordinator	Wendy Hutt
Parking Coordinator	Fred French

Production Volunteers

Front of House & Canteen

Tierney Thibodeau
Rhea Vardy-MacPhee
Amy Glynn
Barbara Cowan
Clair Henderson
Helen Goyan
Jane Thorne
Joy Resch
Kelly Morrison
Kristina Creamer
Leo Weniger
Lillian Goyan
Lorraine Watson
Lynn Isnor
Rose Anne Kennedy
Sandy Mitchell
Wanda Sutherland

Props

Anna Goold
Erin Niedermayer
Kelly Morrison
Fred French
Michele Gaudet

Parking

Fred French
Stephen Melanson

Publicity

Alexandra French
Kelly Morrison
Stephen Melanson
Sandy van der Made

Set Construction & Painting

Beth Spratt
Stephen Melanson
Lorne Morrison
Joe LeBlanc
Bryn Rowlands
Siyoon Kim

Hall & Lobby Setup

Knights of Columbus
Bedford Council 9404
Elaine Melanson
Michele Gaudet
Joy Resch
Pat Brinton
Beth Spratt
Peggy Parker

Wardrobe

Terri Smith Fraser
Sanda Knox
Kelly Morrison
Michele Gaudet
Kim Howard
Cast Members

Lighting Crew

Bryn Rowlands
Lorne Morrison
Sanda Knox
Duncan MacPhee
Stephen Melanson

Technical Operators

Sanda Knox
Lorne Morrison
Stephen Melanson

Phone Notification

Diana Mabbett
Dianne McDonald
Audrey Peake
Rose Pearle
Debbie Saarloos
Sandy van der Made

Set Dressing

Kelly Morrison
Beth Spratt
Erin Niedermayer
Michele Gaudet
Anna Goold

And others whose
names may have
been missed due to
publishing deadlines.

THANK YOU!

Bedford Players Theatre asks you to
support our wonderful sponsors, whose
ads you see throughout this program!

Bedford Players Executive Council

President	Elaine Melanson
Vice-President	Alexandra French
Treasurer/Ticketing Liaison	Rhea Vardy-MacPhee
Secretary	Pat Brinton
Artistic Director	Michele Gaudet
Member at Large	Fred Fench
Member at Large	Ann Merritt
Member at Large	Joy Resch
Member at Large	Michael Stack
Member at Large	Mike Taylor
Member at Large	Amanda Willmore
Member at Large	Clair Henderson



Eastcoast Harpshop

Harps, Concerts,
& Lessons

Facebook: EastcoastHarpshop
cherylreidohagan@icloud.com



In Home Pet Sitter
Nicole Pettipas
Certified Vet Assistant

902 499 5602
pawsathome@hotmail.com

Your pet is
happiest at home!

PAWSATHOME.CA

We appreciate...

All Saints Anglican Church, Wardens, Pastors, Church Secretary, Caretaker and Parishioners

for their on-going support and for our wonderful rehearsal and performance venue.

Habitat for Humanity ReStore for the loan of some set furnishings.

Ron's Army Navy Store for costume donations.

Our **Sponsors** who are found throughout this program. Please support them with your patronage!

Our many **Volunteers** who work diligently to make our productions a huge success. Their time, talents and efforts are greatly appreciated by all.

You—Our **Patrons**—who make it all worthwhile!

THANK YOU!

Upcoming...



bedfordplayers.ca

***Join us at our AGM on June 26
for the launch of our
2025-26 Season!***



The magic of live theatre

dartmouthplayers.ns.ca

Two One-Act Plays
Irreconcilable Differences by J.L.

Allen

Gooseberry Pie by Nick Jupp

Directed by Bryn Rowlands

June 5-21

Theatre
Arts
Guild

tagtheatre.com

Sherlock by Wireless
A Classic Radio Mystery

By Edith Meiser, Denis Green and
Anthony Boucher

Adapted for live performance by
John C Sherwood

Directed by Bill VanGorder

May 29-June 14